



# RILEYBOT

The AI ChatBot  
Supporting Learning  
In Schools



Sphinx AI

[sphinxai.education](https://sphinxai.education)

Building the future of  
education with  
Artificial Intelligence



RileyBot is the AI ChatBot designed specifically for schools. It is built to support learners in and out of the classroom, meeting them wherever they are on their learning journey.

RileyBot is a personal teaching assitant for every child, offering tailored support suitable for learners in Primary, all the way through to the end of Secondary School.

## Key Features



### A SUBJECT SPECIALIST IN EVERYTHING

Designed to support learners no matter what lesson they are in, RileyBot can move between topics, or connect them in whatever way is needed.



### SAFEGUARDING-FIRST APPROACH TO AI

Strong filtering combined with Teacher & Parent Dashboards ensure that everybody is in the loop when it comes to how each child is using AI.



### SPECIFIC SUPPORT FOR SEND

Dyslexic-friendly fonts, coloured backgrounds, read-aloud and voice-only features ensure that the experience of using RileyBot is inclusive and easy.



### THE ONLY CHATBOT APPROPRIATE FOR PRIMARY & SECONDARY

Designed with safety and transparency in mind, RileyBot can move through the entire school experience alongside learners of any age and ability.

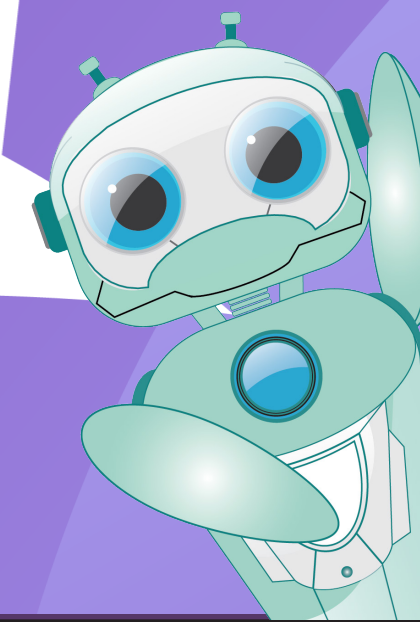


### SEAMLESS INTEGRATION

RileyBot syncs with your school's MIS meaning that onboarding is easy and allows RileyBot to deliver age-appropriate language and levels of complexity.

## WHAT CAN RILEYBOT DO?

- Supports the learner precisely when they need help the most, whether in the classroom or at home.
- Helps learners plan an essay rather than writing one for them.
- Simplifies concepts that pupils are not yet familiar with in language that they understand.
- Extends a learner's knowledge on topics that interest them.
- Tests learners on new content and helps them prepare for assessments.
- Gives feedback on work (including handwritten tasks) which can be uploaded as an image .
- Speaks or writes in a range of languages either to support new language learning or where English is not the first language of the learner.



# PROVEN TO IMPROVE PUPIL SELF-EFFICACY, CRITICAL THINKING & METACOGNITION

In a recent study following pupils in Key Stages 2 & 3, researchers using validated question sets, clearly showed that pupils made huge progress in terms of self-efficacy (13% gain), independent learning (9% gain) and metacognition (9% gain) when using RileyBot. The survey results were further supported by interviews with both pupil and teacher users:

For the first time in my career, I am able to focus on talking to the children about their learning rather than just re-explaining the task. It is an absolute revelation.

**Primary School Teacher**

I think it gives me confidence in approaching a challenge because I know I've always got something that can help me.

**Secondary Pupil**

The quality of questions and conversations we get into are completely different from when they just look things up in a book or even online.

**Secondary School Teacher**

It helped me to realise that I could have improved my writing by using flashbacks or shifts in perspective. When I checked it myself, I couldn't think of how I could make it better, but now I do.

**Primary Pupil**

## AI Scheme of Work supported by RileyBot

Schools who subscribe to RileyBot will also be given access to exclusive resources assisting them in delivering lessons on Artificial Intelligence. These lesson plans are aimed at Key Stage 2 & 3. The Scheme of Work covers topics such as 'Ethics', 'Bias', 'Creativity' and 'Privacy' in relation to AI. Each lesson comes with a range of activities which can be tailored to your own pupils.

Find out more and book a demo at  
**sphinxai.education**

